

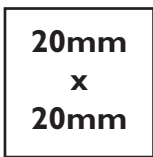
This document contains 16 A4 pages.

- Print out all of the pages at 100%. Do not 'scale to fit'.
- Use the test square below to ensure printing at the correct size.
- You will need glue/tape and a pair of scissors or a craft knife.
- Each page is numbered at top left. There is a 20mm overlap between the pages where glue can be applied.
- Using the crop marks at the edge of each sheet, match up the pages as diagram, right.
- You may wish to trim off the excess at the edges of each sheet.
- When complete, cut out the pattern pieces along the outer, seam allowance edge.
- Pin to fabric of your choice, cut out and assemble.

Order of assembled pages

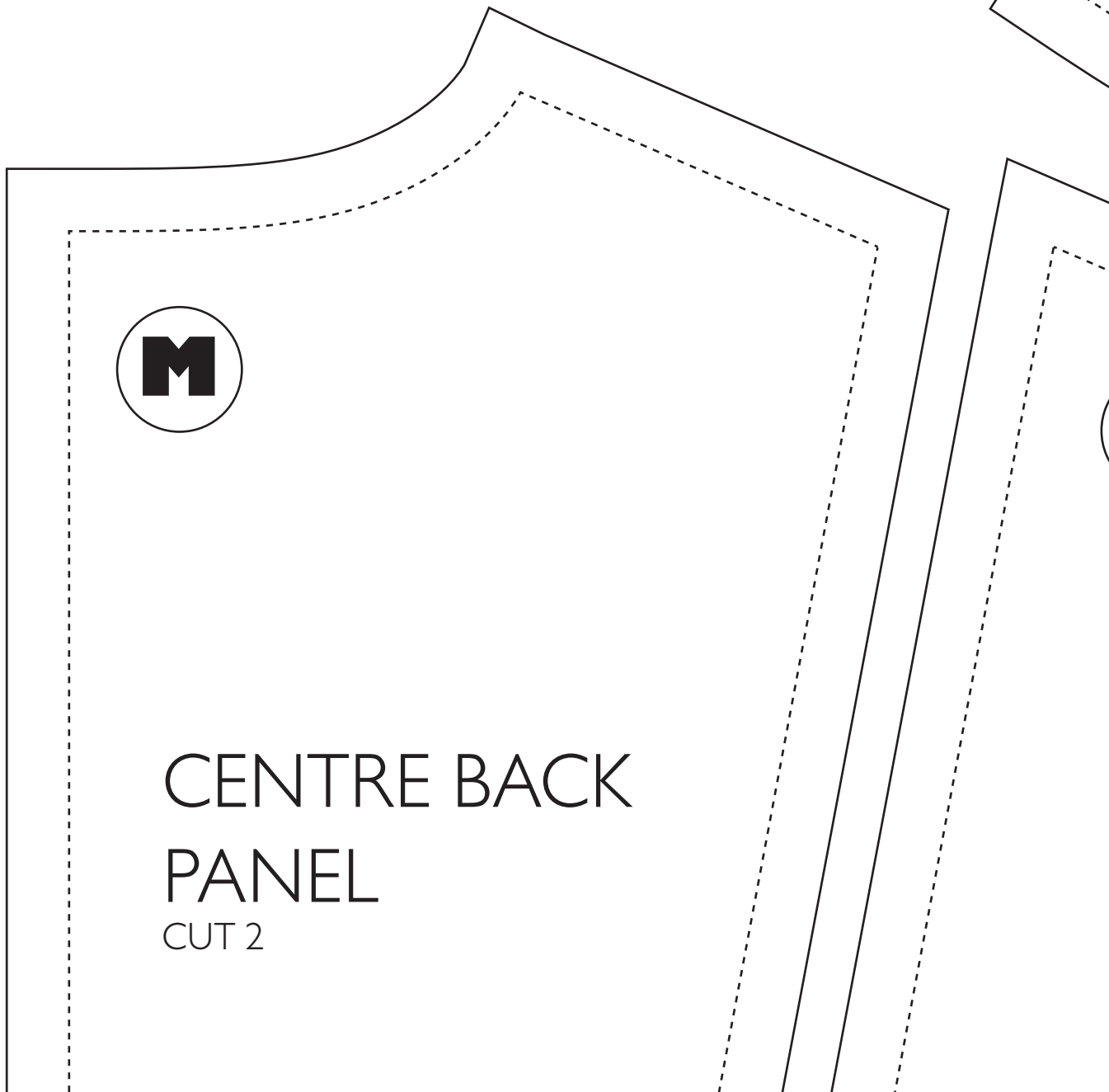
1,1	2,1	3,1	4,1
1,2	2,2	3,2	4,2
1,3	2,3	3,3	4,3
1,4	2,4	3,4	4,4

↑ 20mm overlap



Print Size Test Square

When printed, the square at left should measure exactly 20mm x 20mm. If not, check your print settings and ensure that you're printing each page at 100% with no 'scaling'.



CENTRE BACK SEAM

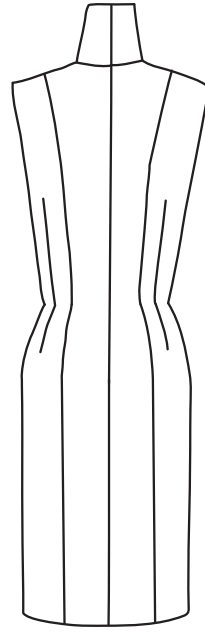
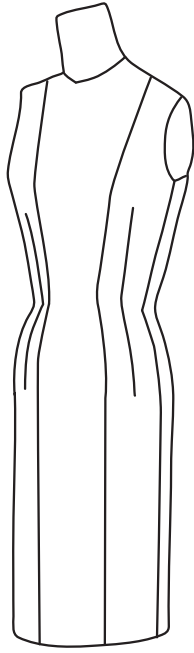
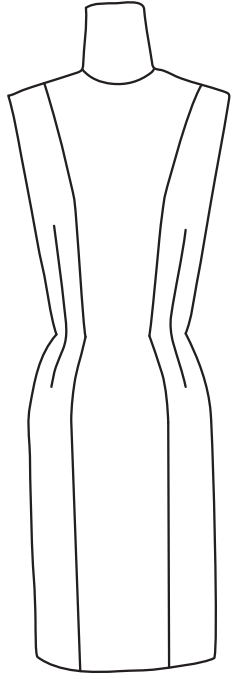


NECK COVER

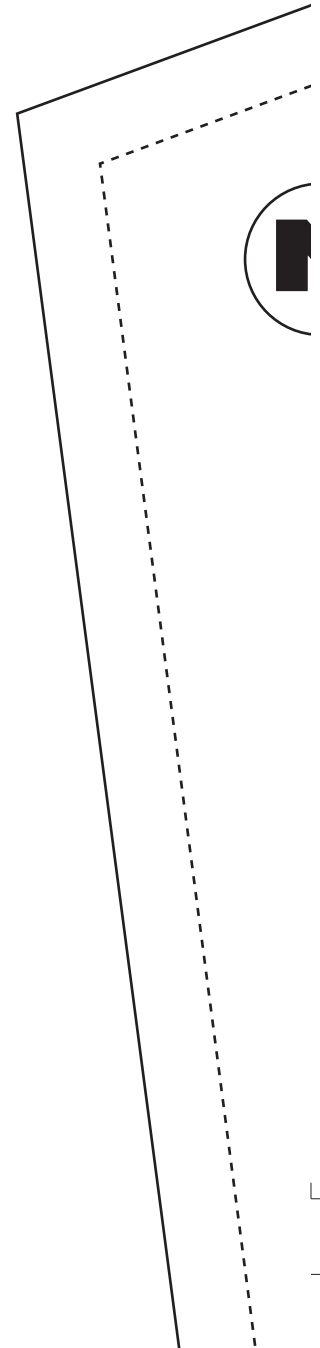
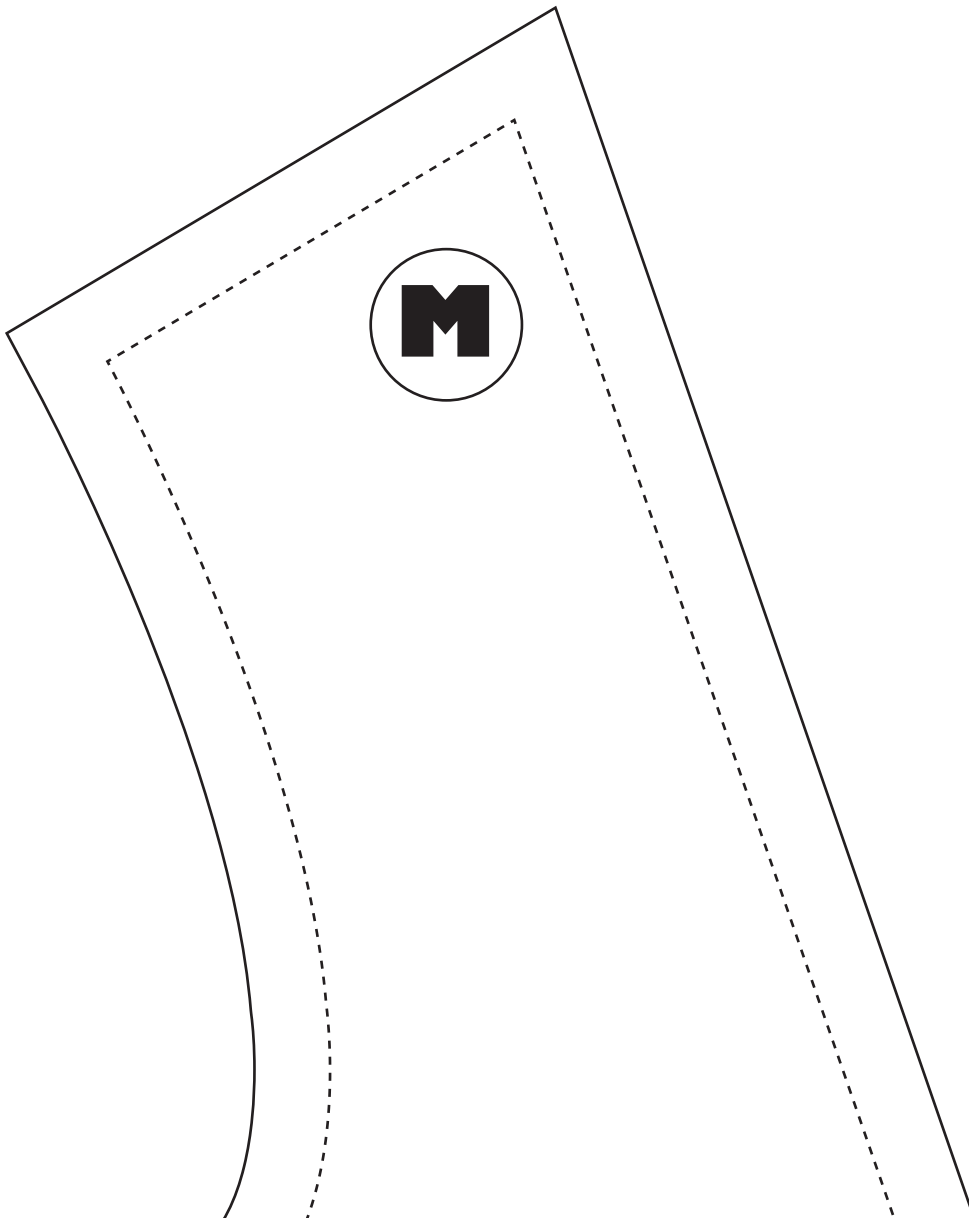
CUT 1 ON FOLD

CENTRE FRONT FOLD





CENTRE FRONT FOLD

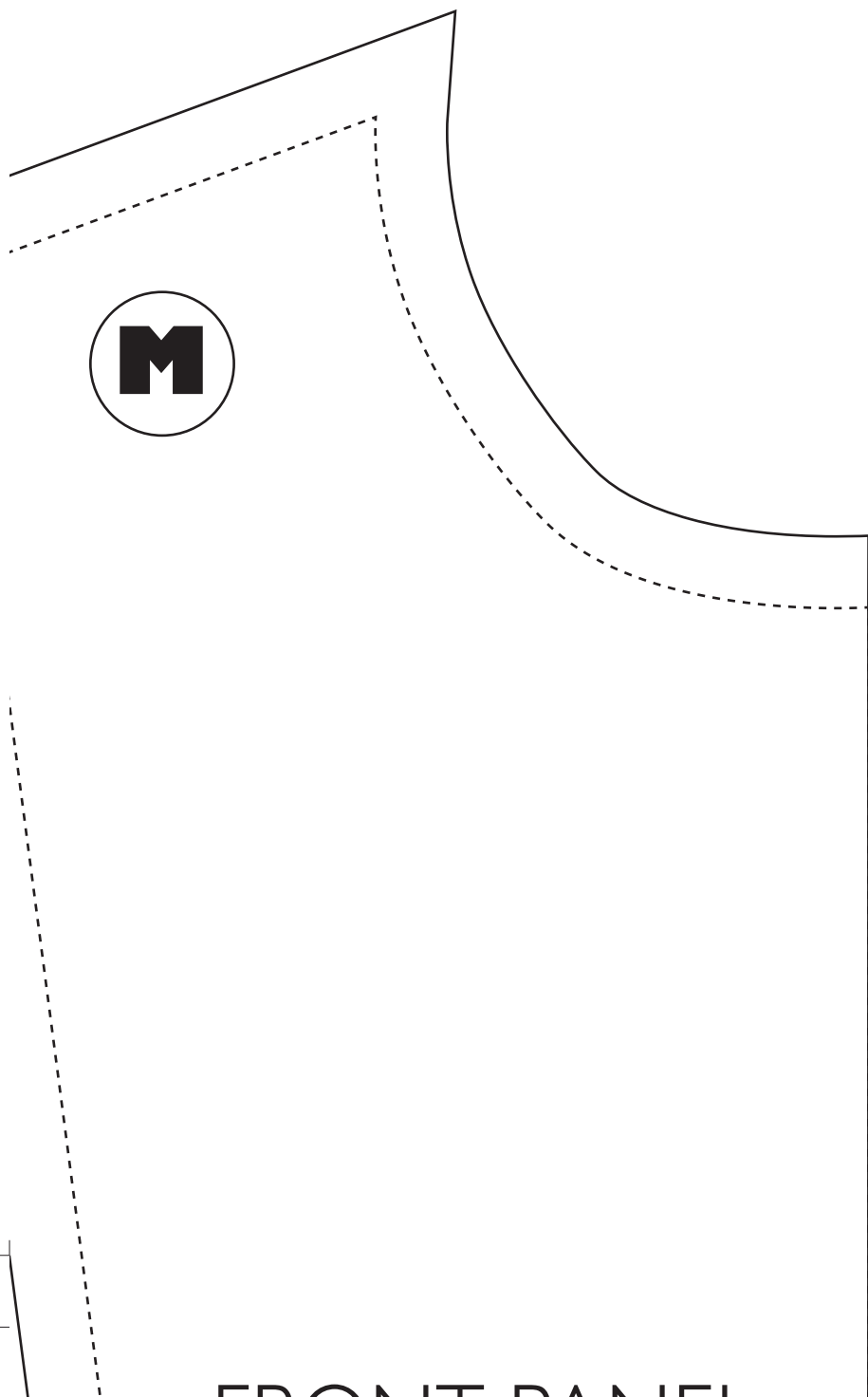




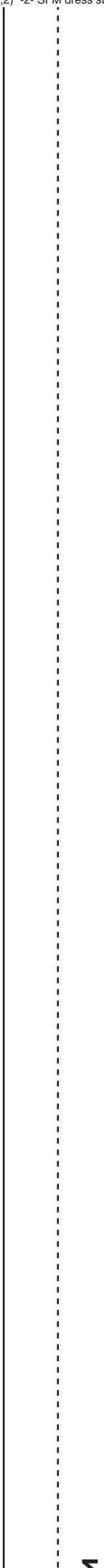
Shoben Flatpack Dress Stand



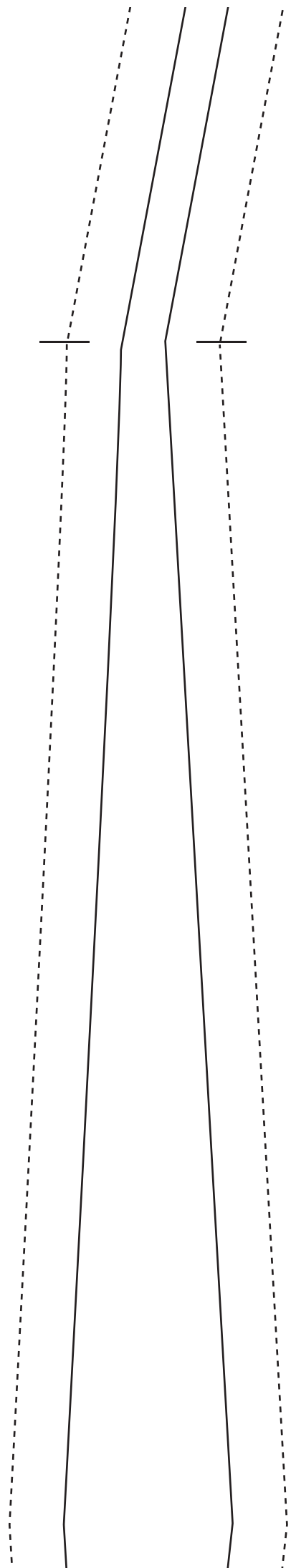
1cm seam allowances added



FRONT PANEL



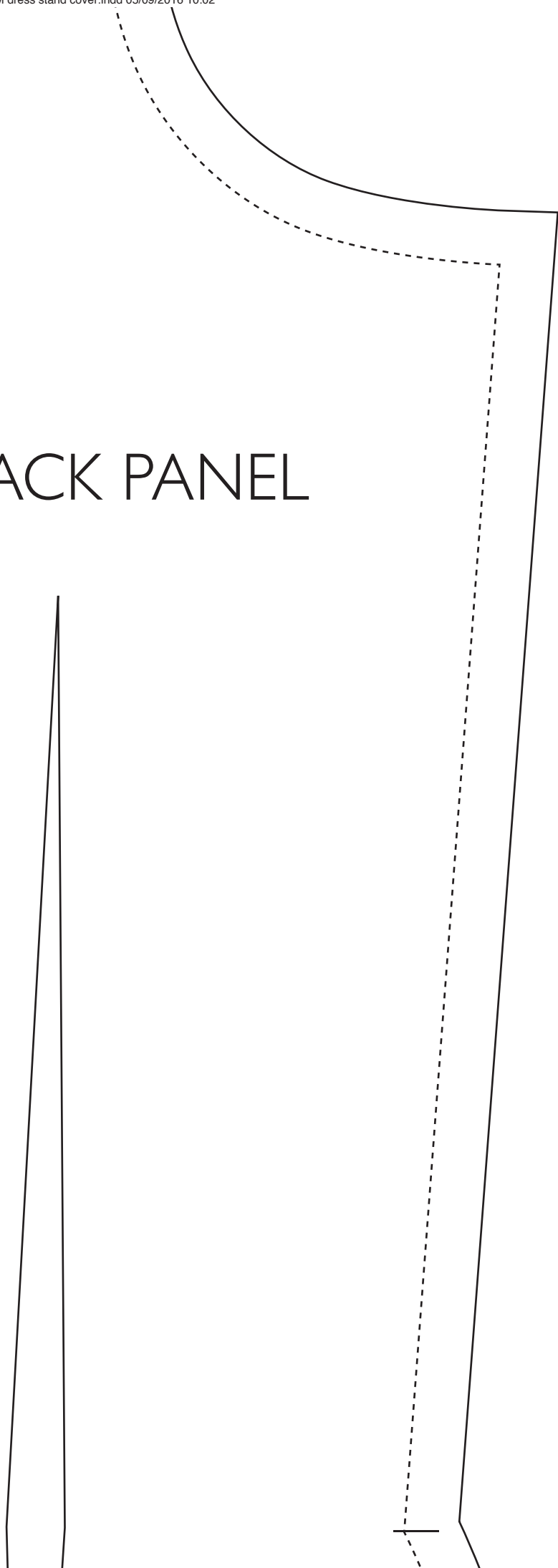
1

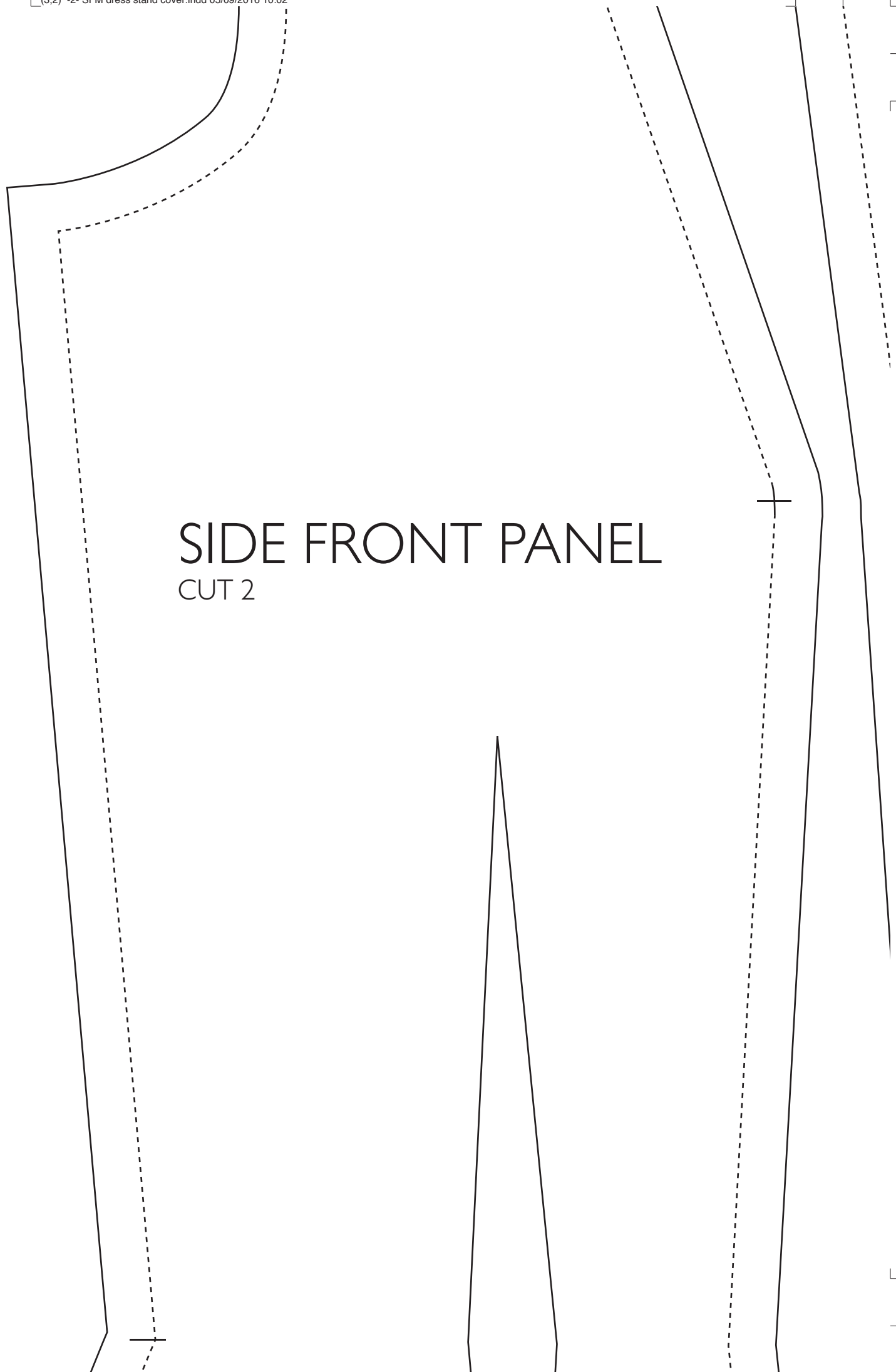


SIDE
CUT 2

SIDE BACK PANEL

CUT 2



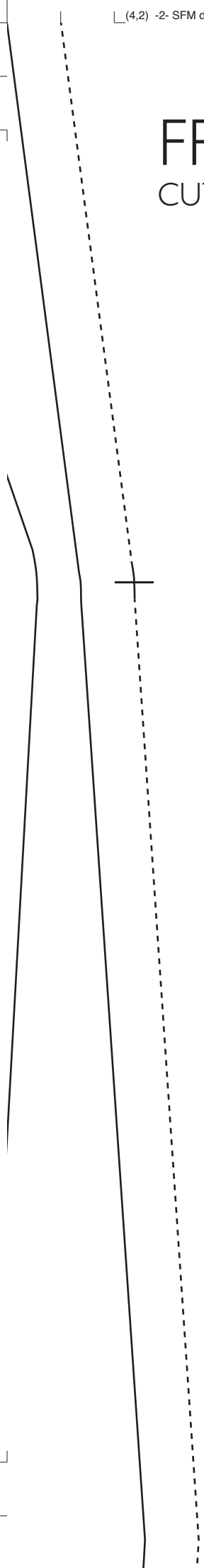


SIDE FRONT PANEL

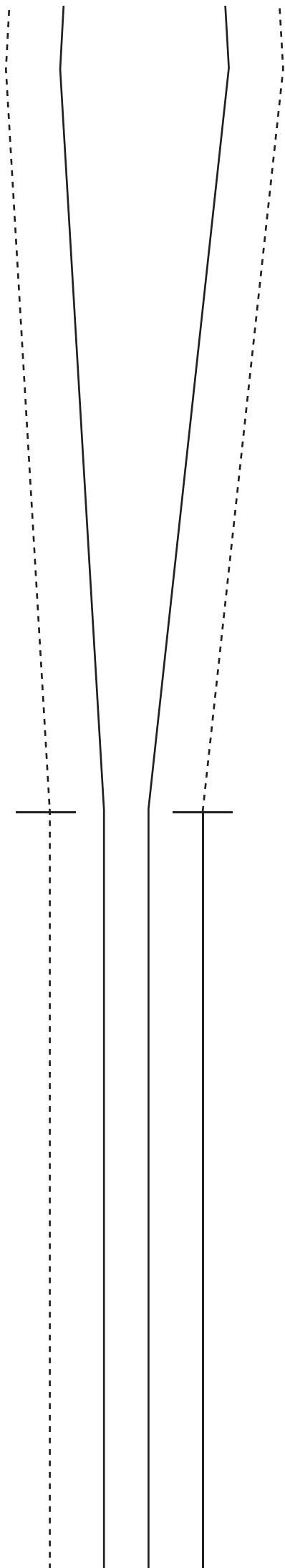
CUT 2

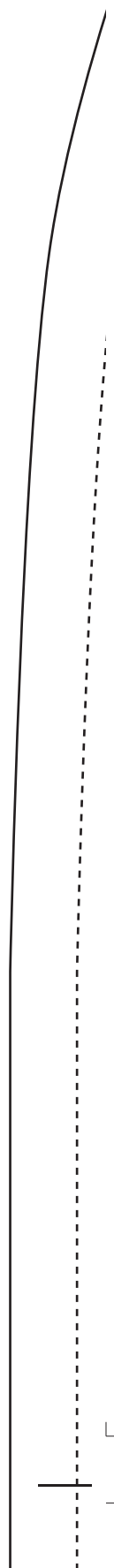
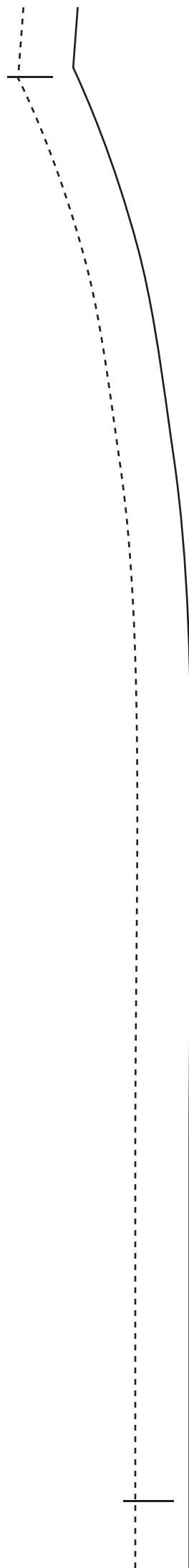
FRONT PANEL

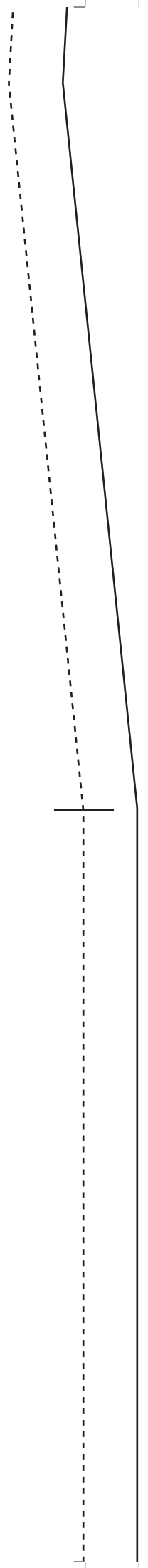
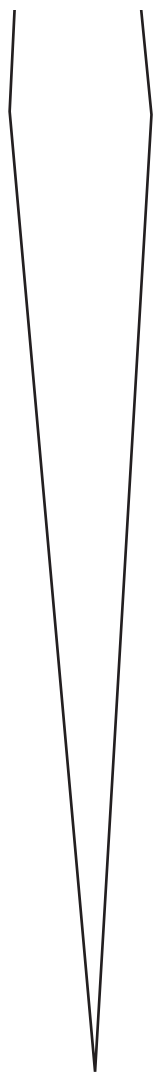
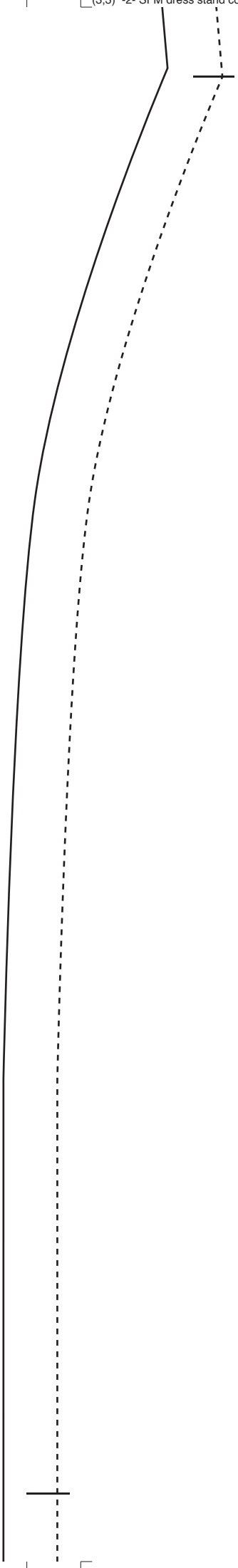
CUT 1 ON FOLD

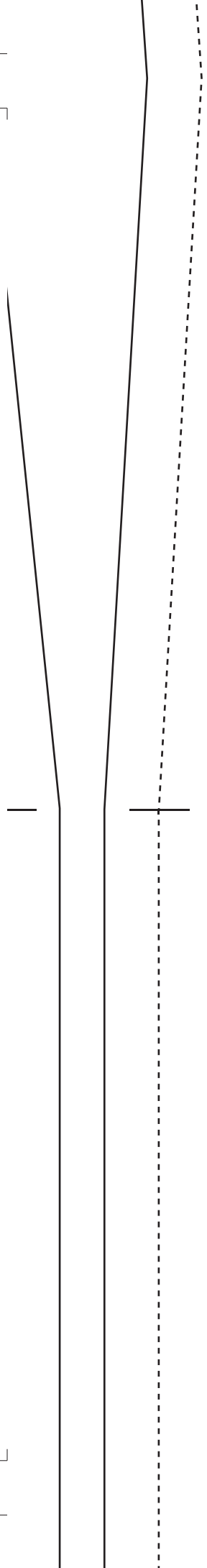


CENTRE BACK SEAM









CENTRE FRONT FOLD

